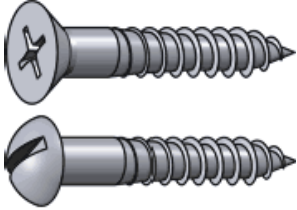
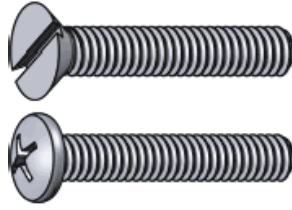


Fastener Categories



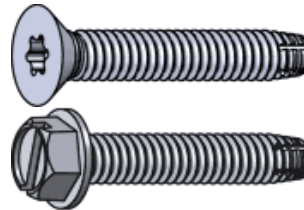
Wood Screws

Screws with a smooth shank and tapered point for use in wood. Abbreviated WS.



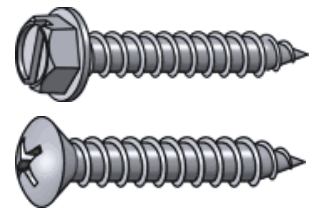
Machine Screws

Screws with threads for use with a nut or tapped hole. Abbreviated MS.



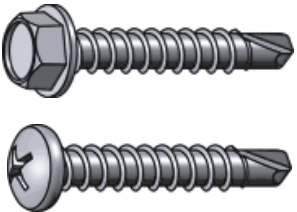
Thread Cutting Machine Screws

Machine screws with a thread cutting (self tapping) point.



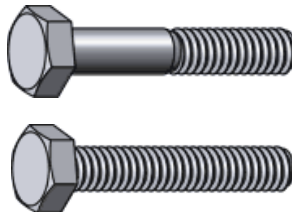
Sheet Metal Screws

Fully threaded screws with a point for use in sheet metal. Abbreviated SMS.



Self Drilling SMS

A sheet metal screw with a self drilling point.



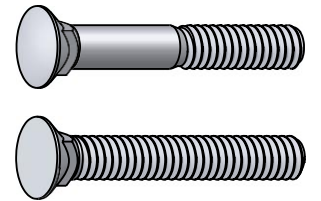
Hex Bolts

Bolts with a hexagonal head with threads for use with a nut or tapped hole. Abbreviated HHMB or HXBT.



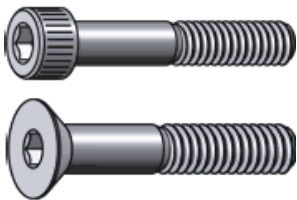
Carriage Bolts

Bolts with a smooth rounded head that has a small square section underneath.



Plow Bolts

Similar to carriage bolts but used for attaching the cutting edge of a plow to the plow blade.



Socket Screws

Socket screws, also known as Allen Head, are fastened with a hex Allen wrench.



Lag Bolts

Bolts with a wood thread and pointed tip. Abbreviated Lag.



Eye Bolts

A bolt with a circular ring on the head end. Used for attaching a rope or chain.



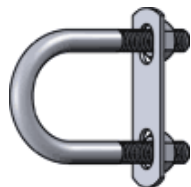
Eye Lags

Similar to an eye bolt but with wood threads instead of machine thread.



J-Bolts

J shaped bolts are used for tie-downs or as an open eye bolt.



U-Bolts

Bolts in U shape for attaching to pipe or other round surfaces. Also available with a square bend.



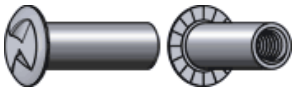
bend.



Shoulder Bolts

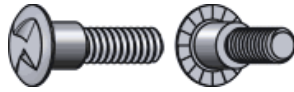
Shoulder bolts (also known as stripper bolts) are used to create a pivot point.

Fastener Categories (continued)



Sex Bolts

Sex bolts (a.k.a. barrel nuts or Chicago bolts) have a female thread and are used for through bolting applications where a head is desired on both sides of the joint.



Mating Screws

Mating screws have a shoulder that matches the diameter of the sex bolts they are used with.



Hanger Bolts

Hanger bolts have wood thread on one end and machine thread on the other end.



Set Screws

Machine screws with no head for screwing all the way into threaded holes.



Timber Bolts

Machine threaded fasteners with a wide domed head. The head has fins underneath that prevent the bolt from spinning during installation. Typically used in wood.



Cotter Pins

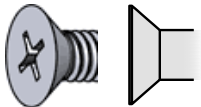
Cotter or split pins have two tines which are bent apart to hold them in place.



Rivets

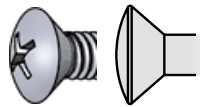
Used to join sheets of metal. During installation the rivet body is deformed to permanently lock in place. Blind rivets can be installed without access to the back side of the material.

Head Styles



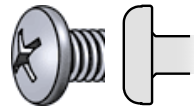
Flat

A countersunk head with a flat top. Abbreviated FH



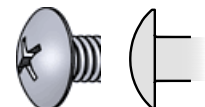
Oval

A countersunk head with a rounded top. Abbreviated OH or OV



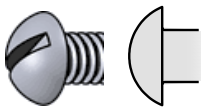
Pan

A slightly rounded head with short vertical sides. Abbreviated PN



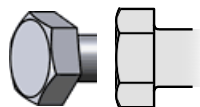
Truss

An extra wide head with a rounded top.



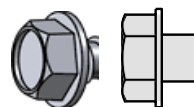
Round

A domed head. Abbreviated RH



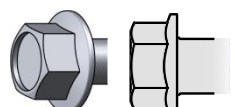
Hex

A hexagonal head. Abbreviated HH or HX



Hex Washer

A hex head with built in washer.



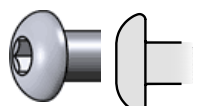
Hex Flange

A hex head with built in flange.

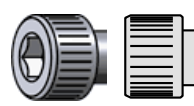


Slotted Hex Washer

A hex head with built in



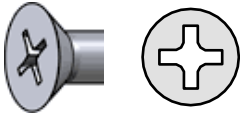
washer and a slot.



Button

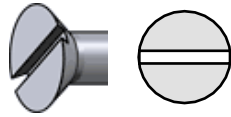
A low-profile rounded head using a socket drive.

Drive Types



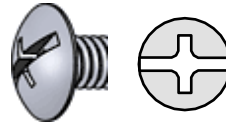
Phillips and Frearson

An X-shaped drive.
Abbreviated PH.



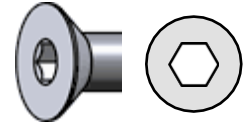
Slotted

A slot in the head.
Abbreviated SL.



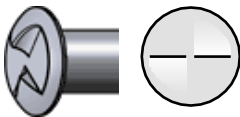
Combination

A combination of slotted and
Phillips drives.
Abbreviated combo.



Socket, Hex or Allen

A hexagonal hole for
use with an Allen
wrench.



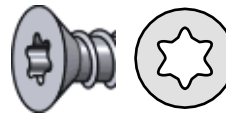
One Way

Installs with a normal
slotted driver but can not be
removed without special
tools.



Square

Also known as
Robertson drive.
Abbreviated SQ or SD.



Star

A six-pointed star pattern,
specifically designed to
prevent cam-out and stripped
heads.

Washer Types



Flat

A flat washer, used to
distribute load. Available in
SAE, USS and other
patterns.



wood construction.



Fender

An oversize flat washer
used to further distribute
load especially on soft
materials.



Finishing

A washer used to obtain a
'finished' look. Usually used
with oval head screws.



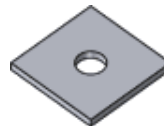
External Tooth Lock

A washer with external
'teeth'. Used to prevent
nuts and bolts from backing
out.



Internal Tooth Lock

A washer with internal
'teeth'. Used to prevent
nuts and bolts from backing
out.



Square

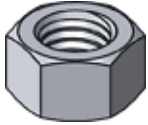
A square shaped washer.



Ogee

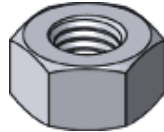
Thick, large diameter, cast
iron washers with a curved
or sculpted appearance.
Typically used in dock and

Nut Types



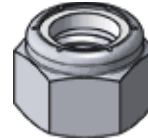
Hex

A six sided nut. Also referred to as a Finished Hex Nut.



Heavy Hex

A heavier pattern version of a standard hex nut.



Nylon Insert Lock

A nut with a nylon insert to prevent backing off. Also referred to as a Nylock.



Jam

A hex nut with a reduced height.

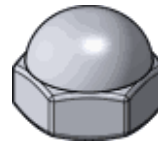


Nylon Insert Jam Lock

A nylock nut with a reduced height.



without thread damage.



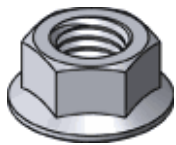
Wing

A nut with 'wings' for hand tightening.



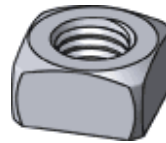
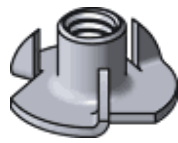
Cap

A nut with a domed top over the end of the fastener.



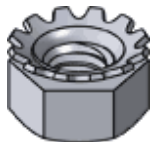
Flange

A nut with a built in washer like flange.



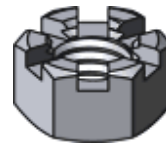
Square

A four sided nut.



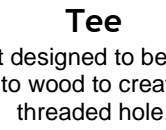
K-Lock or Kep

A nut with an attached free-spinning external tooth lock washer.



Slotted

Slotted nuts are used in conjunction with a cotter pin on drilled shank fasteners to prevent loosening.



Tee

A nut designed to be driven into wood to create a threaded hole.



Coupling

Coupling nuts are long nuts used to connect pieces of threaded rod or other male fasteners.



Pin Lock

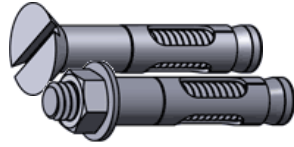
A nut that does not require an high installation torque and can be installed and removed

Anchoring Products



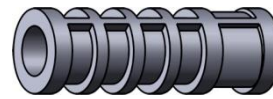
Stud Anchors

A.k.a. Wedge Anchors. One piece expansion bolts for heavy duty fastening into stone or solid concrete.



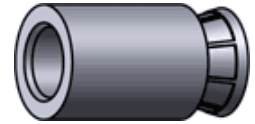
Sleeve Anchors

Heavy duty masonry anchors. Does not require a solid base material for installation.



Lag Shields

Medium duty anchors for use in concrete, brick or mortar. Use with a lag bolt.



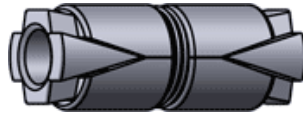
Machine Screw Anchors

A two-piece machine thread anchor for use in stone, brick, or concrete.



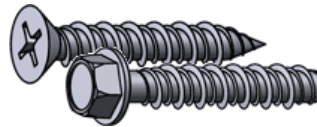
Drop-in Anchors

A heavy duty machine thread anchor for concrete or stone.



Double Expansion Sleeves

Expansion anchor for masonry that ensures contact along the length of the hole.



Concrete Screws

Used in concrete, brick or block. A quick and easy way to fasten in light to medium duty applications.



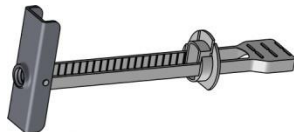
Spring Toggle Wings

Non-removable fasteners that expand behind the material, e.g. inside a wall, for a secure grip.



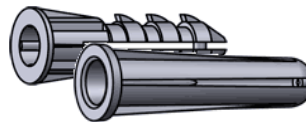
Plastic Toggle

When these anchors are driven in they expand inside the hole for a secure grip. Drill hole the same size as the anchor. Non-removable.



Kaptoggle®

A non removable anchor commonly used for hollow spaces such as drywall and masonry block.



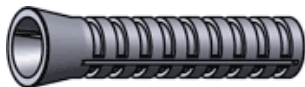
Conical Anchors

Plastic anchors used with sheet metal screws. Can be used in most materials.



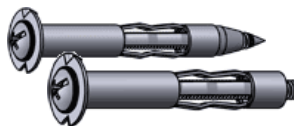
Self Drilling Drywall Anchors

Quick-install plastic anchors used in drywall with sheet metal screws.



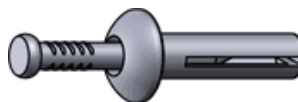
Wood Screw Anchors

This anchor is made of lead and can be used with wood screws or sheet metal screws.



Hollow Wall Anchors

A.k.a. Molly Bolts. Used for light duty anchoring in drywall or other hollow walls.



Nail Drive Anchors

Non removable anchors that expand inside the hole when the nail like pin is driven.



Anchor Bolts

L shaped, machine threaded anchors. Typically embedded in concrete when it is poured.